

Scotland Hydroelectric Project

- * Run of River
- * Turbine Upgrade
- * Recreation Plan
- * Fishing Area
- * Access

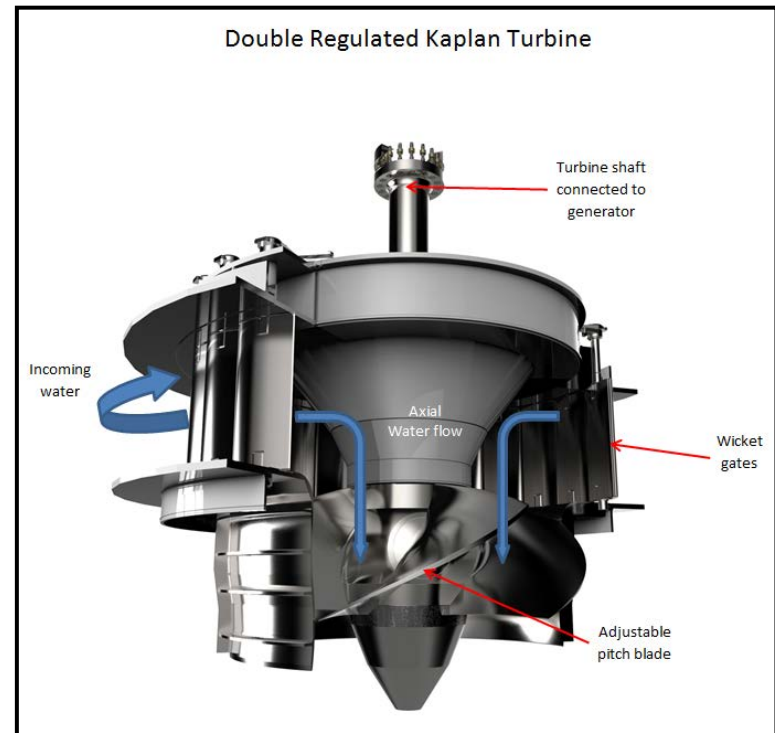


Run of River

- * 1937 – 2013: Pond and Release
Pond and release water for generation within 3 foot elevation range with minimum flow bypass when unit is off line; allowed storage to maximize output (including peak load) and minimize equipment cycling.
- * 2014 – November 2016 when low flow turbine is installed: Modified Run of River
June 2014 the Flashboards were lowered to 77.18 ft elevation.
Operate the turbine keeping impoundment level between 77.28 and 77.97 ft elevation.
Continuously spill over the flashboards or through 30” pipe.
- * November 2016 – Forward: Instantaneous Run-of-River (RoR)
No Ponding - The water entering the reservoir must leave at the same rate of flow; inflow equals outflow on an “instantaneous” basis.
Either through the turbine, over the flashboards, through 30” pipe or Tainter gates

Kaplan Turbine Upgrade

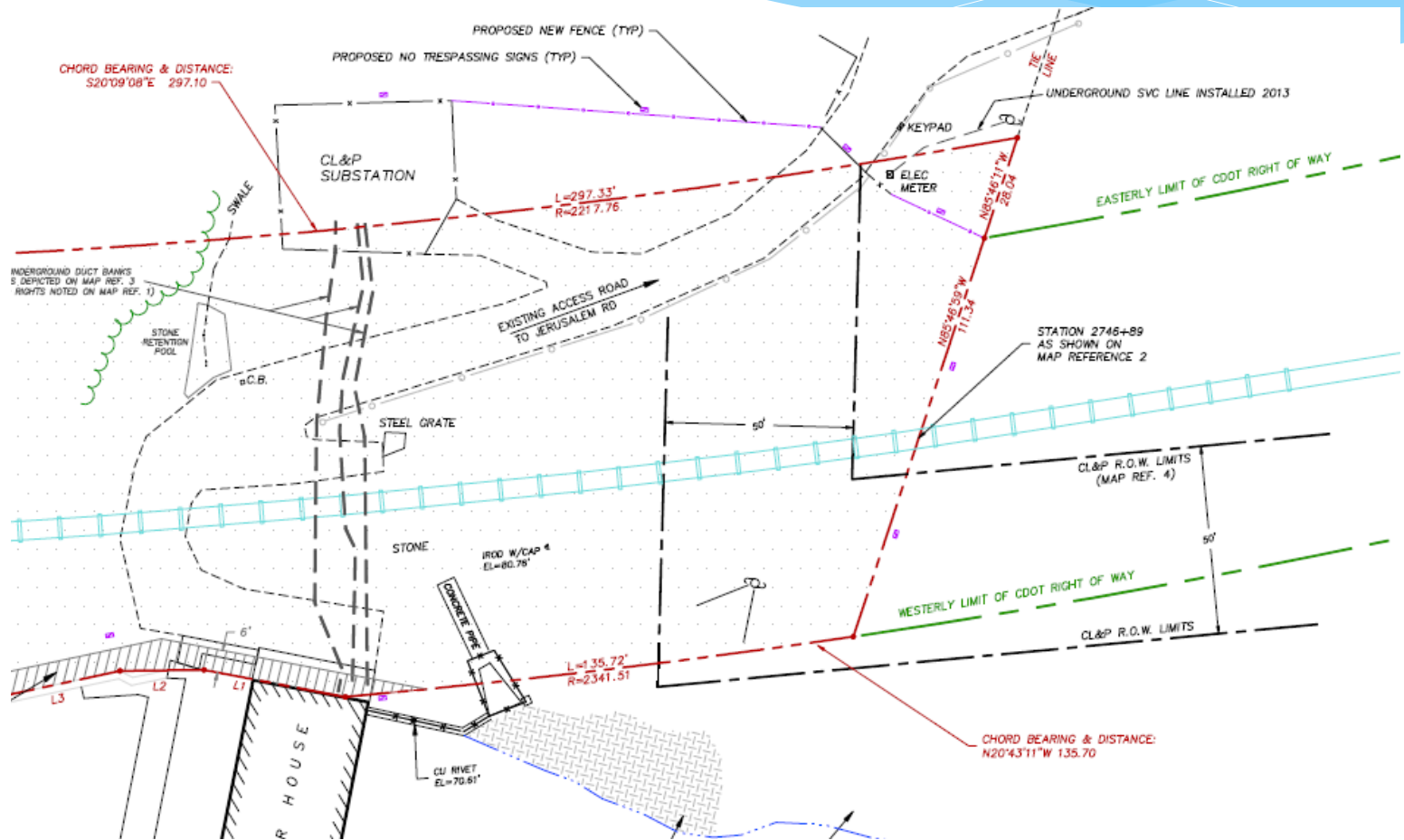
- * River flows below 160 cfs
Fish attraction or spill
- * River Flows between 160 and 1350 cfs
Kaplan turbine operates
- * River flows greater than 1350 cfs
Kaplan turbine operates
Spill
Tainter gates



Recreation

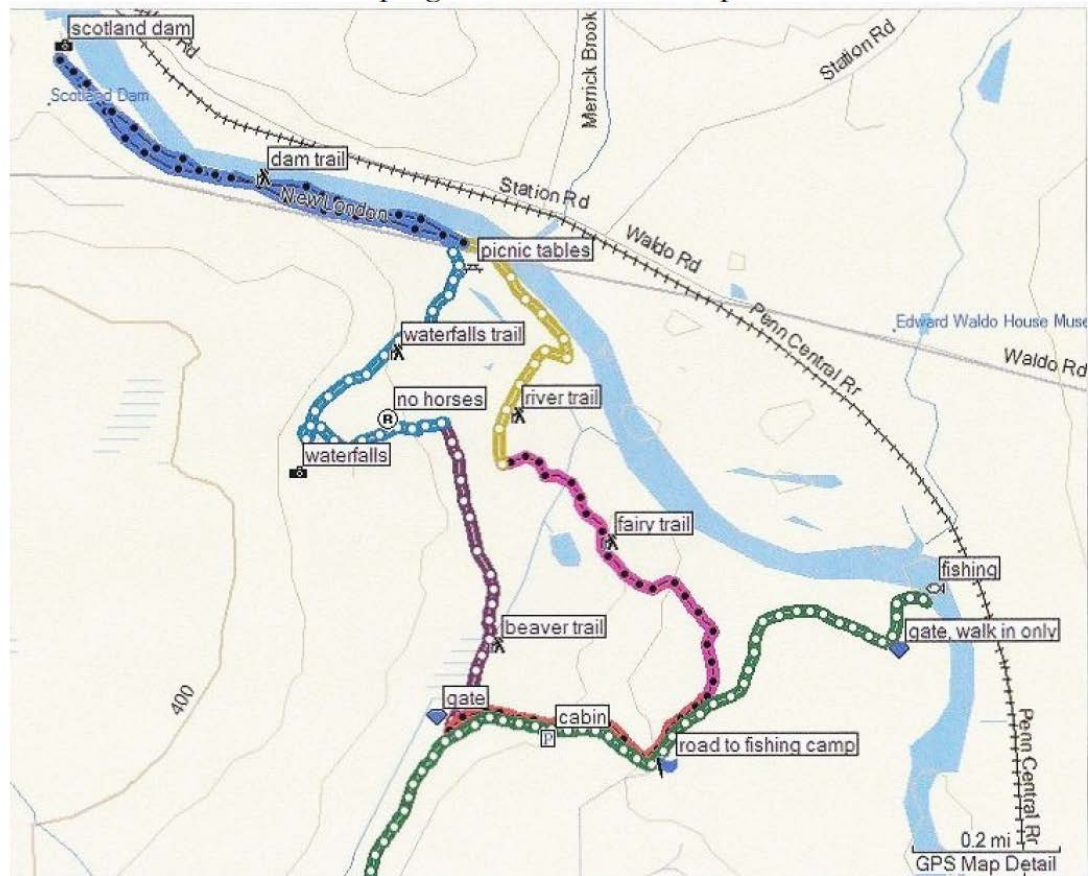
- * Recreation Management Plan approved by FERC on September 3, 2015
- * Tailrace fishing access on west bank
- * Canoe portage trail along west bank over earthen dam section
- * Gravel path and bench

Providence & Worcester Railroad



Sprague Land Trust

Sprague Preserve GPS Map





-  Vehicle Control Gate
-  Chain Link Fence
-  Canoe Portage Route
-  Fishing Access Area